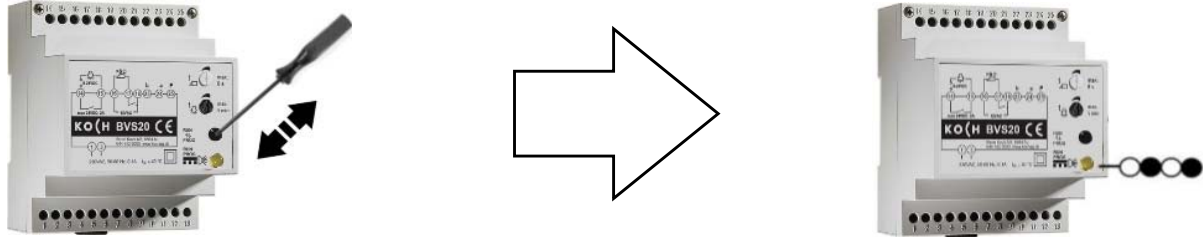


Brief programming instructions

Door (video) intercom TC:Bus with central controller BVS20

Linking an indoor station to a call button


The serial number of the **indoor station** unit is sent to the outdoor station and linked to the desired call button.

1. 

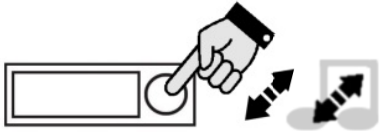
Briefly press the programming button on the BVS20 control unit → the LED flashes
→ Programming mode ON

2a. 

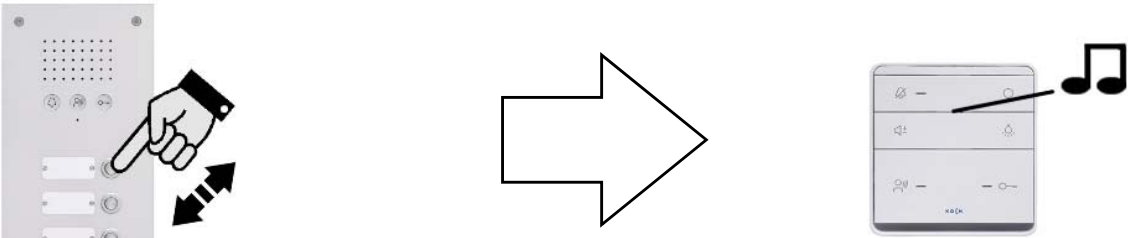
Hands-free **indoor station**: Press talk button briefly
→ A confirmation tone is heard on the outdoor station (TCU3/TCU4).
→ While in programming mode communication over the intercom system is still possible.

2b. 

Handset **indoor station**: pick up the handset

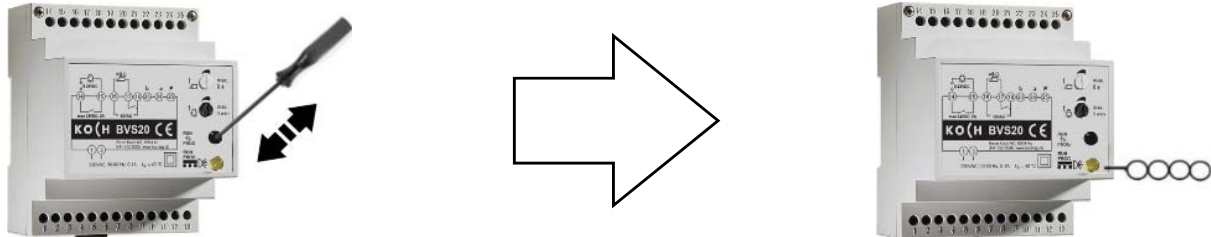
2c. 

Inaccessible indoor station:
Briefly press the apartment doorbell twice. (the 2nd time while it is ringing)

3. 

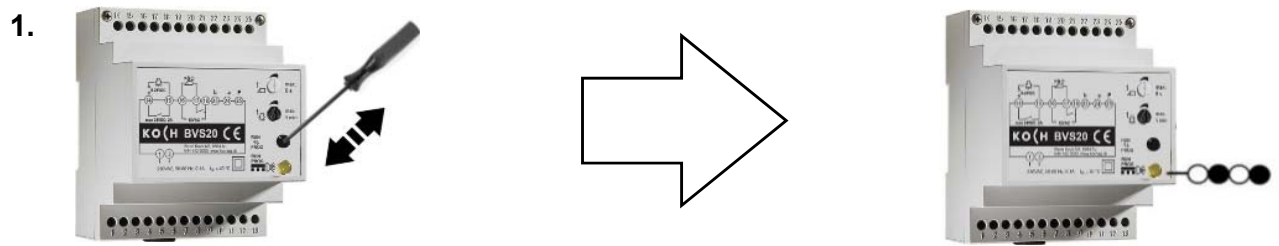
Briefly press the corresponding call button on the outdoor station within 8 seconds. ...both the outdoor and indoor station start ringing.

Linking further indoor stations to call buttons: repeat steps 2 and 3 respectively

4. 

Briefly press the programming button on the BVS20 control unit → LED lights up permanently
→ Programming mode OFF

Linking an additional indoor station to a call button that is linked to one already.
 As a result both indoor stations will ring at the same time.



Briefly press the programming button on the BVS20 control unit → the LED flashes
 → Programming mode ON



Hands-free indoor station: Press talk button briefly

→ A confirmation tone is heard on the external intercom unit (TCU3/TCU4).
 → While in programming mode communication over the intercom system is still possible.



Handset indoor station: pick up the handset



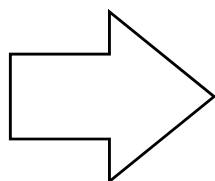
Press **and hold** the corresponding call button on the outdoor station within 8 seconds - wait 3 rings



As soon as you hear the indoor and outdoor station ring ...



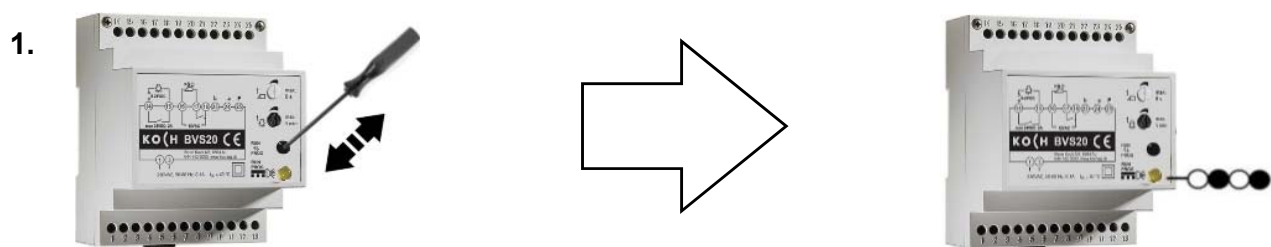
... release the call button immediately.



Briefly press the programming button on the BVS20 control unit → LED lights up permanently
 → Programming mode OFF

Delete the link between an indoor station and a call button

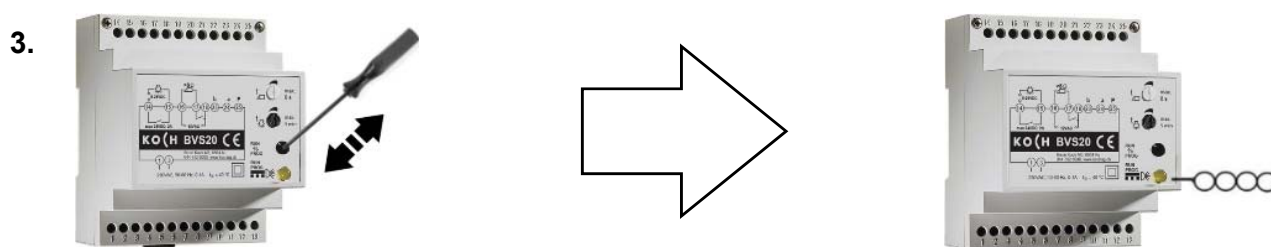
Before a call button can be linked to a different indoor station, the existing link has to be deleted.



1. Briefly press the programming button on the BVS20 control unit → the LED flashes
→ Programming mode ON



2. Press and hold the call button...
... until the second confirmation tone is heard (after approximately 6 seconds)



3. Briefly press the programming button on the BVS20 control unit → LED lights up permanently
→ Programming mode OFF

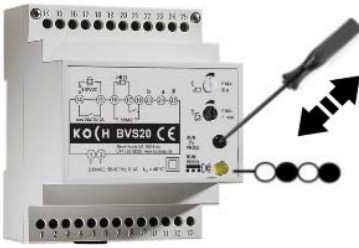
Determine the programming status of an intercom call button

External intercom units are delivered with or without programming.

Testing			
		NoProg-tone (high beep)	Unlinked call button
		Ringing tone	Linked call button
		Error tone (low double beep)	Indoor station not ready for use or faulty programming

Setting the door opener switching time

- 

1. Set the length of time you would like the door to remain open (min. 0.8 s, max 8 s)
- 

2. Save time setting: Briefly press the programming button → the display LED flashes
- 

3. Briefly press the programming button again → the display lights up permanently

Setting the light switching time

- 

1. Set the length of time you would like the light to remain on (min. 0.8 s, max. 5 min).
- 

2. Save time setting: Briefly press the programming button → the display LED flashes
- 

3. Briefly press the programming button again → the display lights up permanently

Service

To frequently asked questions you can find answers at www.kochag.ch **FAQ**
(german or french only)

If you have further questions, please contact our technical customer service team

Tel 044 782 6000
Fax 044 782 6001



René Koch AG
Seestrasse 241
8804 Au/Wädenswil
044 782 6000
044 782 6001 Fax
info@kochag.ch
www.kochag.ch

KO(H)

sehen hören sprechen
voir entendre parler